



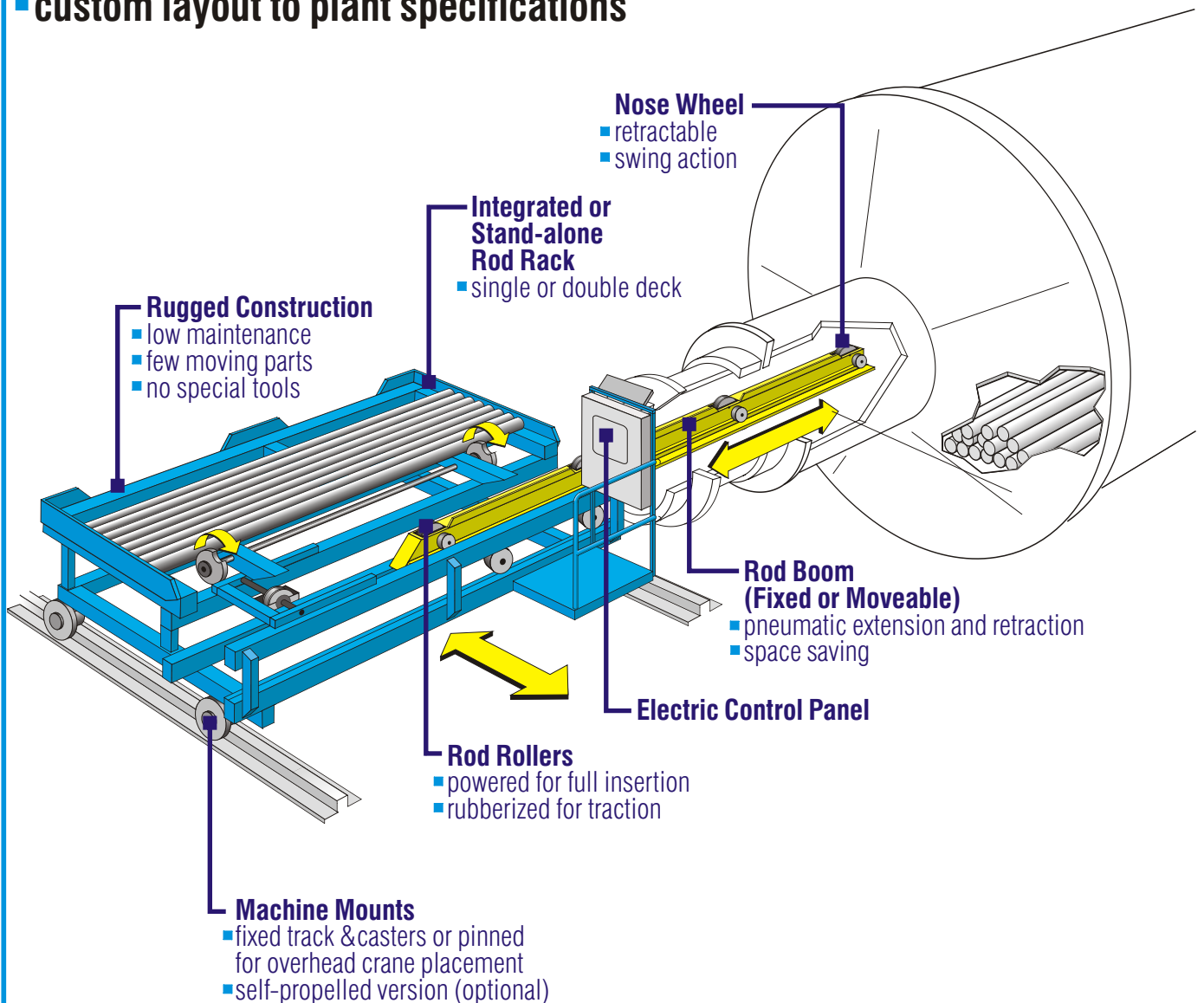
HEATH & SHERWOOD

rod charger

For Charging Grinding Rods Into Rod Mills

- built to suit various size grinding mills and varying lengths and diameter rods
- mechanized rod indexing to eliminate jamming of rods
- custom layout to plant specifications

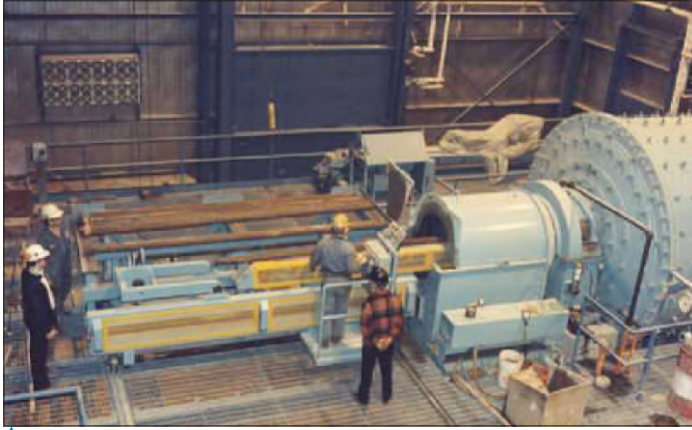
- minimum process interruption
- 30 seconds or less cycle time per rod
- no operator contact with rod
- few moving parts
- no special tools required



rod charger



We are the leader in rod charger manufacturing with over 45 units supplied world-wide.



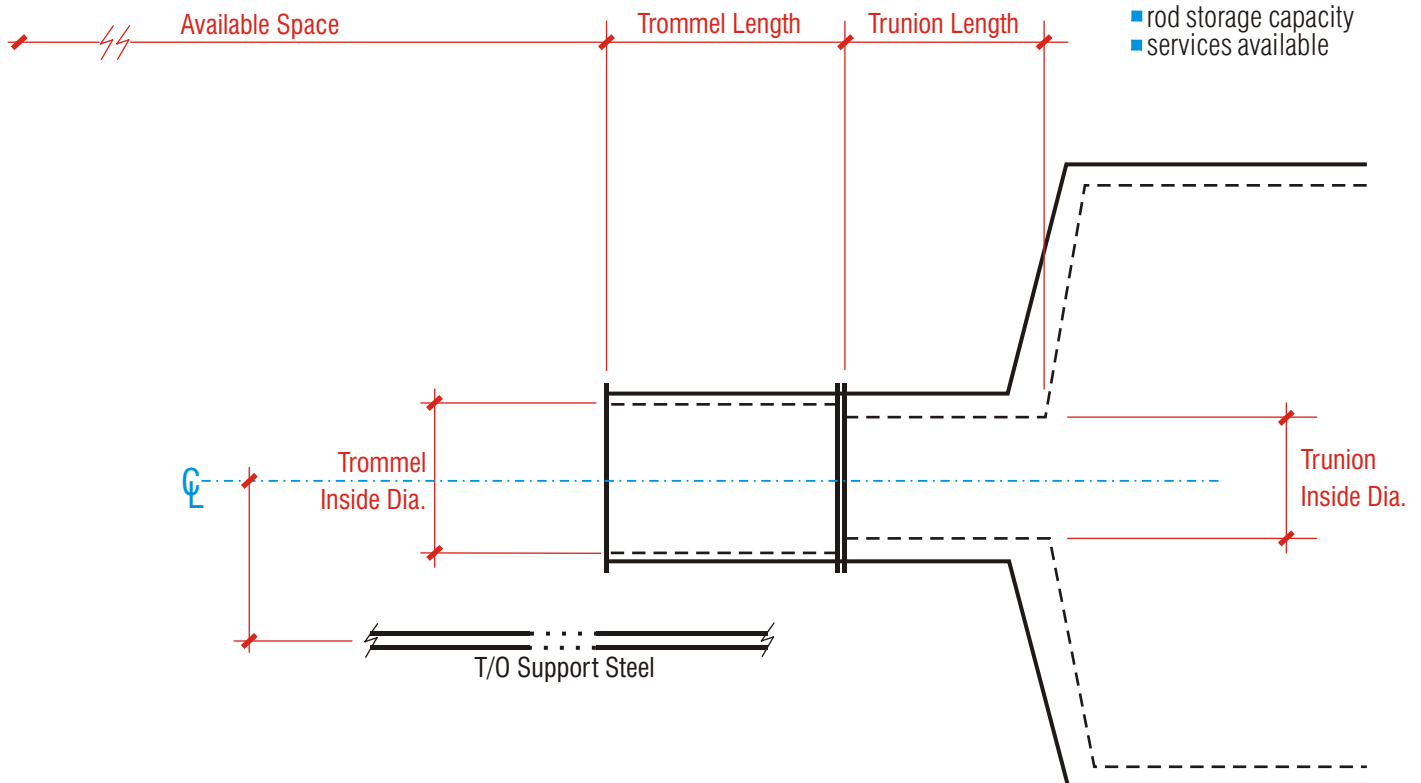
The rod charger layout is customized to plant specifications for any size rod mill and manufactured to suit unique rod charging requirements.



The rod charger with extendable boom moves rods safely inside the trommel/trunion before charging.

Rod Charger Quotation Requirements

- rod mill diameter
- rod size
- rod storage capacity
- services available



Heath & Sherwood (1964) Limited
 Box 340 Kirkland Lake, Ontario
 Canada P2N 3J2

Tel. (705) 567-5313
Fax. (705) 568-8545
Toll Free in North America:
 1 888-go sample (467-2675)
email: info@heathandsherwood64.com

Subsidiary Offices:
 Toronto, Ontario Canada
 Agents World Wide

Visit our website at:
www.heathandsherwood64.com